

xylem



Smart, sustainable water technologies  
for high-performance data centers.

Powering the digital world with energy-efficient solutions



# Data Center Challenges

## Addressing your sustainability goals



### Support for sustainability standards

Xylem's solutions help meet key sustainability standards like LEED and ensure environmental compliance, including:

- Minimizing the use of rare earth magnets within our products
- Creating energy-efficient products to reduce water and energy use within buildings



### Reducing PUE, WUE & CUE\* impact

Technologies reduce water and energy consumption, lowering carbon footprints and enhancing environmental performance with:

- IE5 motor
- High efficiency variable frequency drive hydrovar® X, helping to **reduce up to 40% pump consumption**



### Certifications and credentials

Provision of environmental certifications helps to comply with regulations and meet client expectations



### Commitment to sustainability

Xylem's product design, operations and partnerships reflect a strong dedication to sustainable, responsible development, including:

- Reduce our own water intensity by 30% by 2030
- Net zero by 2050, by decarbonizing the water sector

\*PUE = power use efficiency; measures energy efficiency, calculated as the ratio of total facility energy to the energy used by IT equipment.  
WUE = water usage efficiency; measures a facility's total water consumption against the energy used by its IT equipment.  
CUE = carbon usage effectiveness; measures the carbon emissions of a data center per unit of energy consumed

## Precision cooling for high-performance data centers.

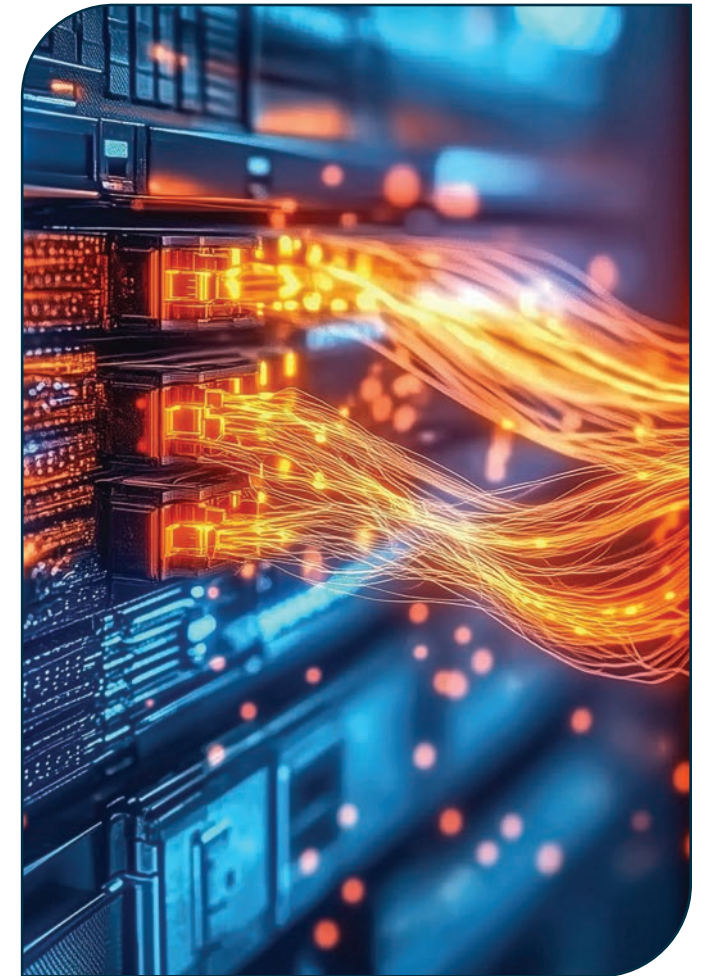
Xylem's liquid cooling systems are engineered to help data centers get as close as possible to the ideal Power Use Efficiency (PUE) target of 1.0.

### Our intelligent pumping and hydronic systems deliver:

- Up to IE5 motor efficiency
- High-density liquid cooling
- Simplified commissioning and remote monitoring

### With deep expertise in mission-critical cooling, we help you achieve:

- Lower operational costs
- Significant energy savings
- Reduced carbon footprint
- Enhanced system reliability
- Increased uptime
- Improved scalability



## Integrated water distribution solutions

Our smart pump systems, including Xylem's hydrovar® X-enabled solutions, are designed to optimize water flow and energy use across cooling and water reuse systems. These solutions support circular water management strategies, helping reduce water consumption and meet sustainability goals.

### Applications include:

- Pumps for chiller and recirculation
- Cooling systems
- Pumps for coolant distribution units (CDUs)
- Treatment solutions
- HVAC solutions
- Wastewater management
- Thermal and flow measurement
- Heat exchangers for heat recovery
- Server cooling solutions
- District heating

## Power in partnership

From concept to commissioning and beyond, Xylem supports engineers and consultants at every stage of the data center lifecycle—whether it's planning, design, operation or ongoing scaling.

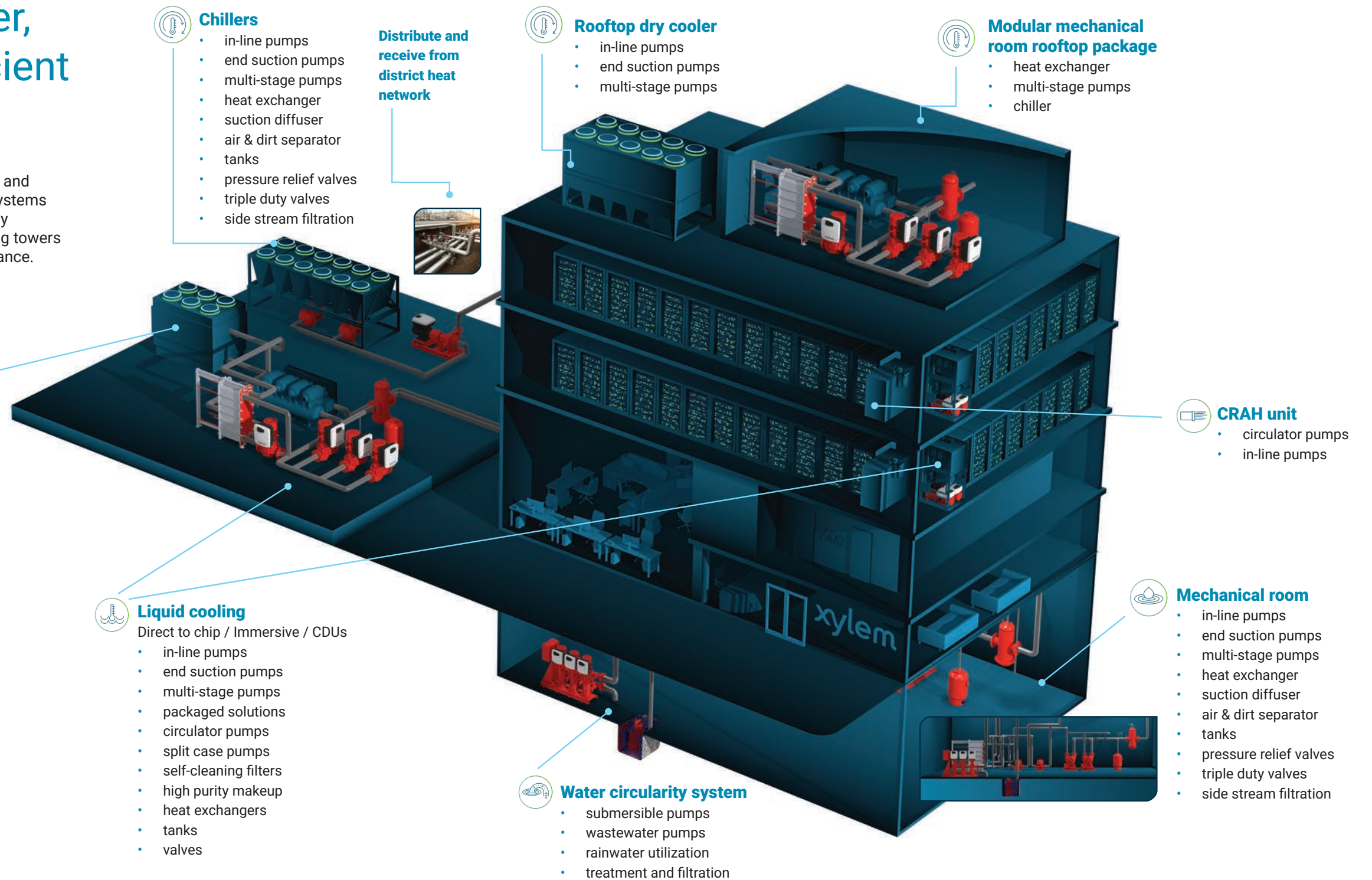
As your reliable water solutions provider, Xylem can help meet data center demand. Hydronic systems from Bell & Gossett support mission-critical data center cooling needs.

**Plan | Design | Build | Operate | Scale**

# Optimizing data center cooling through smarter, more resilient and efficient water management

With AI-intensive data centers increasing demand for water and energy usage, the need for intelligent, low-impact cooling systems is growing. Current projections anticipate data center energy consumption will double, or even triple, by 2028, with cooling towers expected to play a critical role in improving energy performance.

Source: Congress.gov



## In-line centrifugal pumps

Bell & Gossett's in-line series centrifugal pumps deliver space-saving, energy-efficient performance ideal for data center chilled water systems. With advanced hydraulic design, simplified maintenance and compatibility with building automation, they support reliable, low-footprint cooling in mission-critical environments.

### Product features:

- Integrates with an optional variable frequency drive and has sensed or sensorless control capabilities
- Highly efficiency robust design helps lower operating and maintenance costs
- Flows up to 2,500 GPM
- Heads up to 380 ft



e-80SC  
with drive



e-80X



e-80SC



## Single-stage end-suction centrifugal pumps in A316 stainless steel

The Goulds Water Technology e-SH is a robust line of 316 stainless steel, end-suction centrifugal pumps designed for high efficiency performance in demanding environments. With NSF certification, corrosion resistance and multiple impeller options, it supports reliable cooling and water circulation critical to maintaining uptime and sustainability.

### Product features:

- High efficiency for energy saving
- Highly versatile owing to a wide selection of materials
- Delivery up to 240m<sup>3</sup>/h
- Flow rates up to 1,140 GPM
- Head up to 464 ft TDH
- Maximum temperature up to 250 degrees Fahrenheit



e-SH



e-SHX



## Multi-stage vertical turbine lineshaft pump

Designed to meet wide ranges of service with maximum dependability, Bell & Gossett's lineshaft turbine pumps feature above-ground discharge with water-lubricated line shaft bearings. With advanced hydraulic engineering and a hi-tech design, they support the circulation of cooling fluids to manage heat generated by IT equipment and for emergency flood control.



VTP



## End-suction centrifugal pumps

The Bell & Gossett Series e-1510, e-1510X and e-1531 centrifugal pump delivers unmatched efficiency, broad operating flexibility and reduced energy costs—making it a scalable, high-performance solution for chilled water systems in data centers.

### Product features:

- Robust design for reliability and reduced maintenance
- Highly versatile owing to a wide selection of materials
- Delivery up to 4,000 GPM
- Head up to 520 ft
- True back pullout design with internally self-flushing mechanical seal



e-1510



e-1510X



e-1531X



## Multi-stage pumps

The Goulds Water Technology e-SV is a highly reliable and technologically advanced multipurpose vertical multi-stage pump capable of satisfying the needs of a wide variety of users thanks to its multiple and different construction designs.

### Product features:

- High efficiency hydraulics
- Compact footprint
- Options for IE5 motors
- Delivery up to 725 GPM
- Head up to 1,200 ft



e-SV range

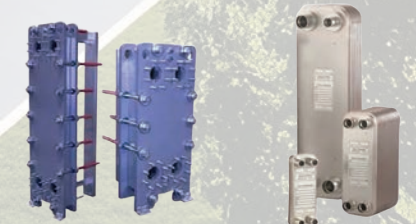


## Heat transfer - brazed and gasketed plate heat exchangers

Xylem offers a versatile portfolio of high-efficiency heat exchangers engineered for compact, reliable thermal transfer and scalable solutions in data center environments.

### Product features:

- Standard and custom configurations
- Innovative high efficiency plate design allows more heat transfer using less space
- An increase in thermal performance of up to 20%
- Added flexibility for installations with 20% smaller footprint



Bell & Gossett GPX and BPX  
Standard Xchange Brazepak and Plateflow



## Horizontal multi-stage pumps

The Goulds Water Technology's e-HM™ series are highly modular pumps fitted with an innovative hydraulic design. They secure energy savings through high efficiency performance and high reliability thanks to the native balancing thrust and robust construction in stainless steel. Multiple technological features allow this pump to maintain constant performance over time.

### Product features:

- Minimal leakage risk
- Tailor-made for a full range of applications
- Delivery up to 29m³/h
- Flows up to 127 GPM
- Head up to 525 ft



e-HM



## Valves, tanks, separators and accessories

Xylem offers a comprehensive suite of tanks, valves, air and dirt separators and circuit setters engineered to optimize hydronic performance, protect equipment and ensure efficient flow control in mission-critical data center cooling systems.

### Products:

- Triple duty valves
- Flow control valves
- Air & dirt separators
- Suction diffusers
- Sensors/Transmitters
- ASME tanks



GSP



Suction Diffuser



Triple Duty Valve



ASME Tank



CRS Separator



## Split case and double suction pumps

Single stage double suction centrifugal pumps with extensive flow and head coverage and a common in-line configuration for easier installation of new and retrofit pumping systems. The Bell & Gossett VSX is a premium vertical split-case pump engineered for high-efficiency hydronic cooling in mission-critical environments. Designed to deliver reliable performance under demanding conditions, it features a service-friendly split-case design, robust construction for 24/7 operation and optimized hydraulics that support energy savings and sustainability goals. With flexible configurations and compatibility with variable frequency drives, the VSX empowers data center operators to meet cooling demands while advancing ESG.

### Product features:

- Engineered space-saving design
- Wide range of sizes and performance to suit required water supply and pressure demand
- High efficiency for energy saving
- Suitable for medium and large capacity systems
- Split case design allows for in-place servicing without disturbing piping or motor alignment, minimizing downtime
- Delivery up to 28,000 GPM
- Head up to 530 ft



e-HSC



VSX



## Packaged solutions

Bell & Gossett's TECHNOFORCE™ line of Packaged Booster Systems combine smart motor technology, variable speed drives and advanced hydraulics to deliver ultra-efficient, turnkey water pressure solutions ideal for data center reliability and performance.

### Product features:

- Extremely compact with different layout solutions that fit even the most narrow spaces
- Adaptable to changing water supply demand thanks to multi-pump operation
- Fully assembled and tested for simple onsite plug-and-play installation
- Highly reduced water supply energy footprint
- High efficiency for energy- and money-saving. IE5 up to 22 kW
- Delivery up to 2,100 GPM and 300 PSI
- Capable of supporting up to 6 pumps
- Multiple pump models and configurations
- Head up to 525 ft



TECHNOFORCE e-MTX Package Booster



TECHNOFORCE e-HVX/e-HVXR



# Discover the hydrovar® X

When connectivity meets simplicity and sustainability.



hydrovar X, the answer to innovation, sustainability and user friendliness all-in-one.

hydrovar X delivers the best in energy efficiency performances with its frequency converter coupled with the ultimate synchronous motor, manufactured by Xylem - integrating decades of expertise and know-how in pumping solutions.

It's the right combination of motors, variable speed drives and pumps that provide great performance, maximum savings and a rapid return on investment.

Unleash the power of hydrovar X at [bellgossett.com/poweredbyx](https://bellgossett.com/poweredbyx)



## The ultimate integrated motor & drive solution in performance, energy efficiency, connectivity and simplicity

From cooling towers to direct-to-chip liquid cooling systems, Bell & Gossett hydrovar® X-enabled smart pump products are powerful enough to meet the demanding requirements of modern data center cooling.

Xylem's hydrovar X represents a significant advancement in pump technology, integrating ultra-premium efficient motors with variable speed drives and pumps to deliver intelligence, performance, connectivity and simplicity in a single package.

It is the right combination of motors, variable speed drives and pumps that guarantees optimum performance, maximum savings and a quick return on investment. In addition to being a variable speed drive, hydrovar X is an intelligent control system that adapts precisely to the needs, helping end users to obtain cost and energy savings while achieving optimum performance.

Available in multiple configurations, the hydrovar X range allows you to harness its power to keep your data center running with minimal downtime, maximum flexibility and IE5 efficiency.

### Rely on our integrated motor & variable speed drive solutions to cool the next generation of data center infrastructure for:

- Optimized energy consumption
- Enhanced system reliability
- Increased cost savings
- Better flexibility





**Data center cooling solutions, including  
additional resources and thought leadership**

**Learn More**



**Bell & Gossett's trusted network of  
partners and local representatives**

**Find Your Data Center Partner Now**

Xylem Inc.

301 Water Street SE,  
Washington, DC 20003

T: +1-914-323-5700  
xylem.com

All information presented herein is believed reliable and in accordance with accepted engineering practices. Xylem makes no warranties as to the completeness of this information. Users are responsible for evaluating individual product suitability for specific applications. Xylem assumes no liability whatsoever for any special, indirect or consequential damages arising from the sale, resale or misuse of its products. Subject to change without notice.

© 2025 Xylem Inc. or its affiliates. All rights reserved.

BG-DCB-CBS-VM-3000036 R2

**xylem**  
Let's Solve Water