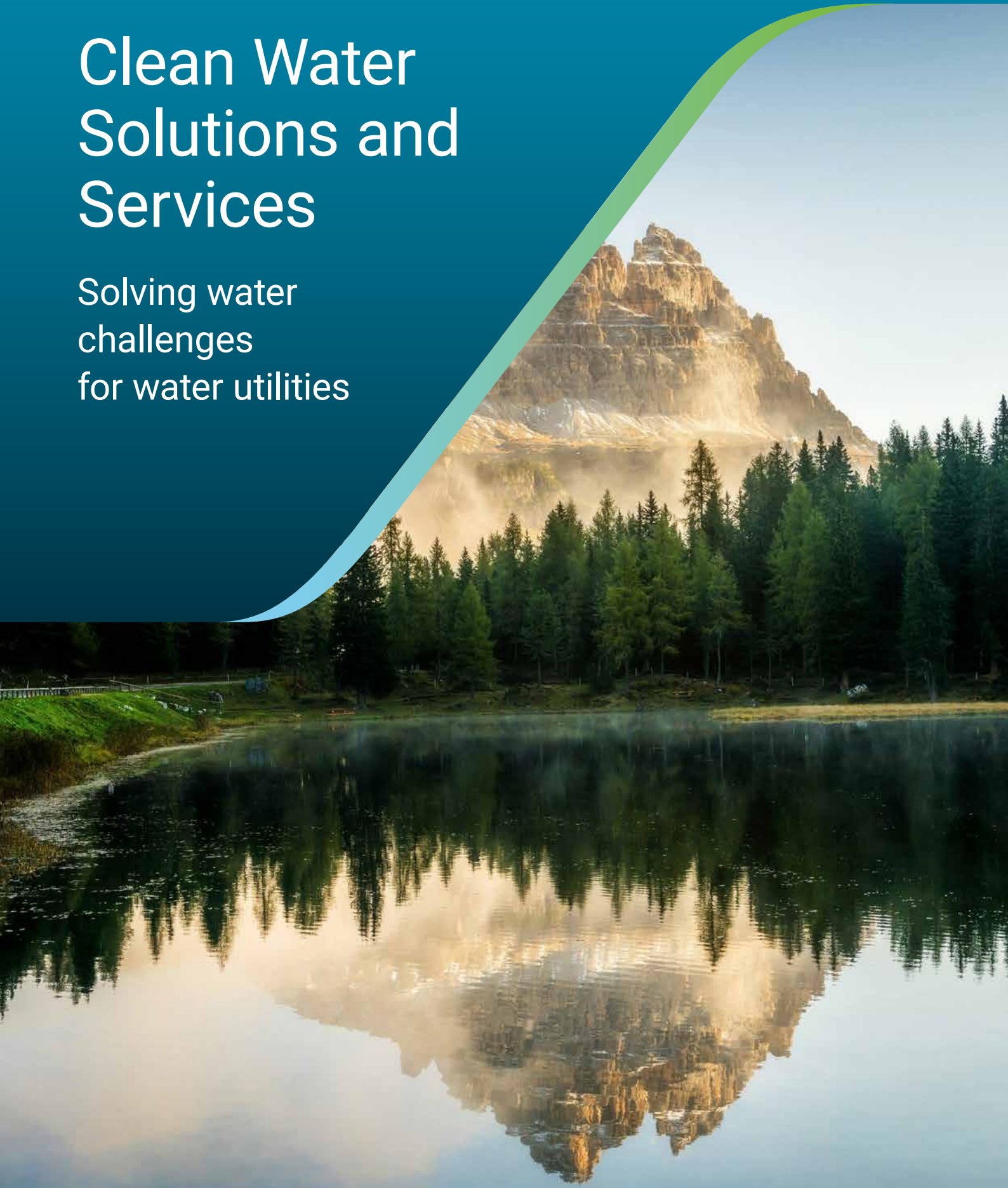




# Clean Water Solutions and Services

Solving water  
challenges  
for water utilities



# Xylem Lowara, a global leader in water technology

Founded in 1968 and based in Montecchio Maggiore, near Vicenza in Italy, Xylem Lowara has been serving customers and users of hydraulic pumps in various sectors for almost 60 years. In 1986 Xylem Lowara was acquired by Goulds Pumps Inc. of Seneca Falls, USA.

The acquisition in 1997 of Goulds Pumps Inc. by ITT Industries made Lowara one of the world's largest pump manufacturing group. In 2011 Xylem completed its spinoff from ITT Corporation, and began a new chapter as a leading global water technology company.

Innovation has always been one of Lowara's distinctive characteristics, as the offer of premium products needs to be maintained and developed over time. Lowara invests economic, human and technological resources in training and research in order to ensure continuous improvements of its products and processes.

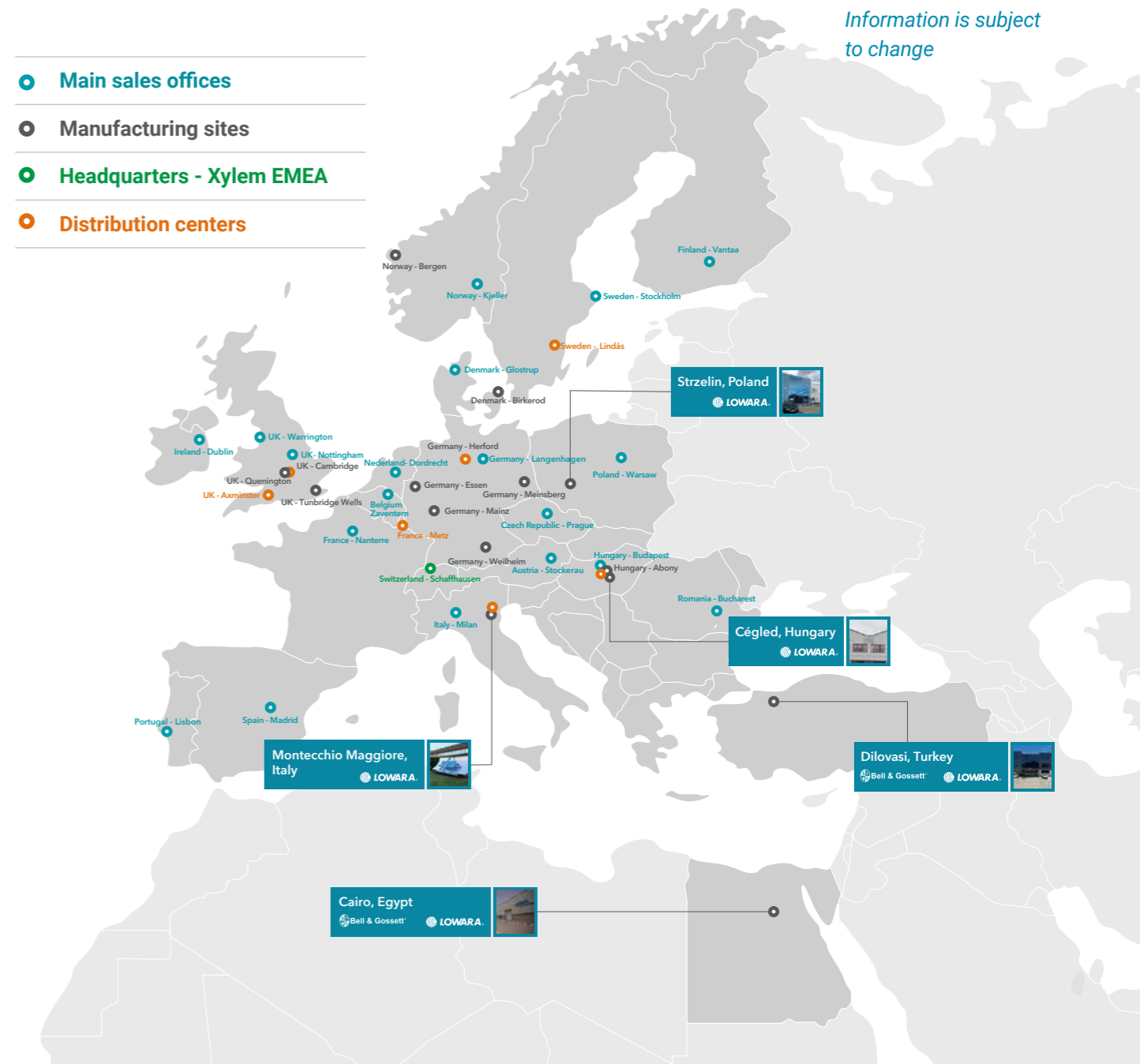
Xylem Lowara uses the most advanced research, design and industrial engineering to enhance its global capabilities. This provide efficient and reliable products, services and solutions for the water supply and water pumping needs in the residential, irrigation, building services and commercial markets worldwide.

Xylem Lowara's comprehensive stock and manufacturing facilities enable fast and efficient responses to customer needs.



Information is subject to change

- Main sales offices
- Manufacturing sites
- Headquarters - Xylem EMEA
- Distribution centers



**Xylem is a Fortune 500 global water solutions company dedicated to advancing sustainable impact and empowering the people who make water work every day.**

Xylem connects diverse capabilities and innovative technologies to provide tailored solutions across the entire water cycle. From moving, treating, and measuring water to optimizing and maintaining water systems, Xylem collaborates with customers to solve their most critical challenges. Together, through partnerships with utilities, industrial manufacturers, building operators, and communities, we are building a more water-secure world.

**\$8.6B**  
USD 2024 Revenue

**250+**  
service and sales locations

**8,300+**  
patents and trademarks

**100+**  
years of innovation and leadership with leading brands

**>23k**  
colleagues with diverse water expertise

**~150**  
countries where Xylem solutions solve water

# Tailoring solutions across the water cycle

Together, customers can transform how water is managed, conserved, reused and returned to nature, making a meaningful difference along the way.

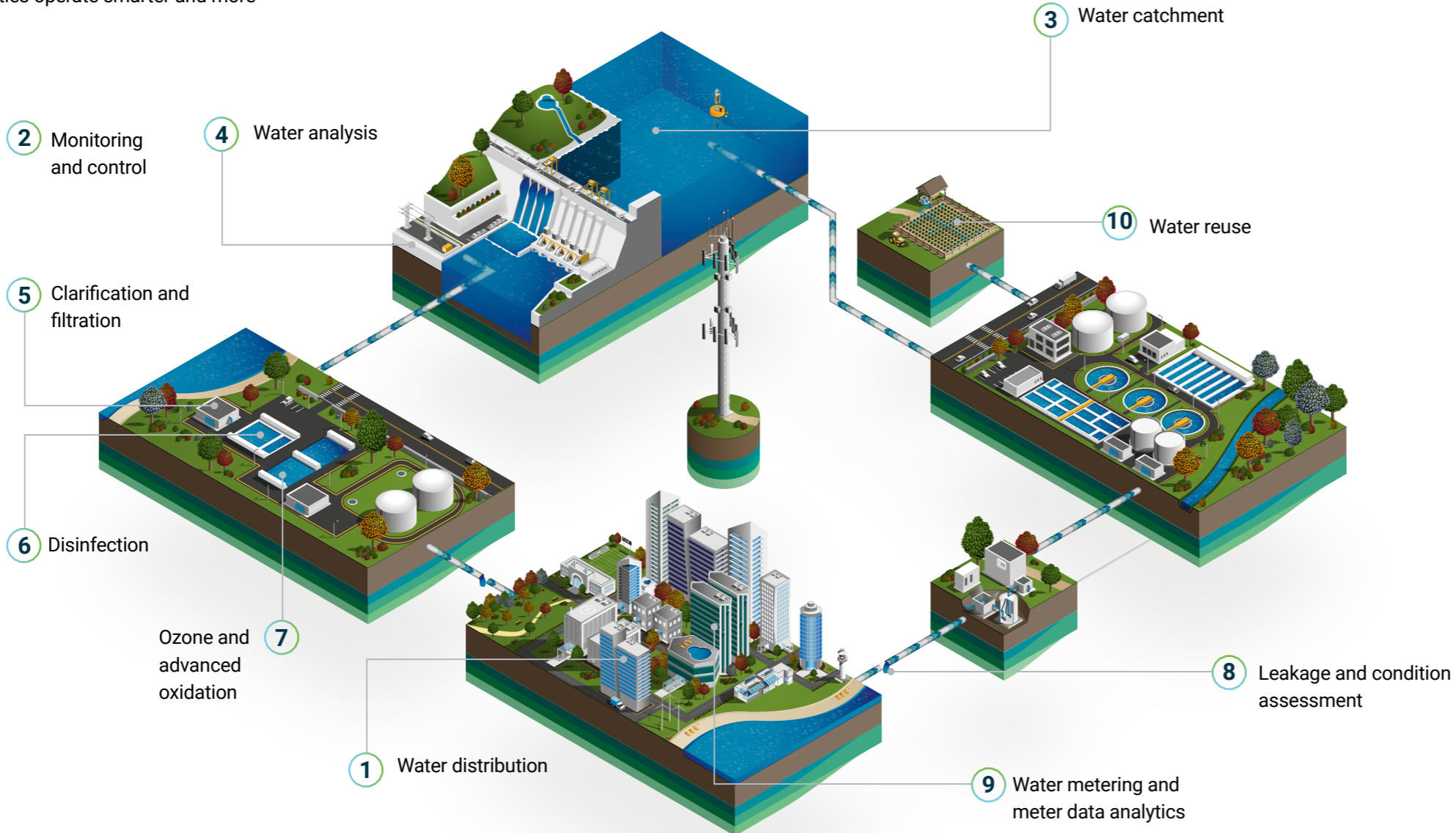
Xylem Lowara delivers trusted water-moving and treatment solutions for public utilities combining efficiency, resilience, and digital intelligence across the entire water cycle.

From source to tap and back again, our technologies support water utilities in delivering safe, sustainable, and cost-effective services to their communities. Whether modernizing ageing infrastructure, meeting regulatory standards, or achieving net-zero goals, Xylem Lowara helps utilities operate smarter and more sustainably.

Our portfolio includes high-efficiency pumps, advanced disinfection and filtration systems, and digital platforms that enable real-time monitoring, predictive maintenance, and data-driven decision-making. From leak detection and water metering to water reuse and quality analysis, we provide end-to-end solutions that reduce losses, optimize performance, and extend asset life.

With Xylem's global expertise and Lowara's European manufacturing, we empower utilities to meet today's challenges and tomorrow's demands with solutions that are easy to integrate, built to last, and backed by local support.

- 1 Water distribution  
An extensive range to secure reliable water supply, including variable and fixed-speed pumps, booster sets, constant pressure sets.
- 2 Monitoring and control  
Asset management, optimised control, predictive maintenance, data analysis, and remote monitoring help you remain in full control around the clock.



- 3 Water catchment  
Full control over water catchment, drilling and bypass with ACS-certified borehole pumps, single-stage pumps, submersible high-capacity pumps and our rental pump fleet.
- 4 Water analysis  
Water quality instruments in the catchment and process analysers on the water treatment works to ensure safe and optimised treatment.
- 5 Clarification and filtration  
Clarifiers and filters providing a complete set of solutions for drinking water purification.
- 6 Disinfection  
Efficient inactivation of harmful pathogens as part of a multi-barrier protection ensuring wholesome drinking water with UV, on-site Hypochlorite generation or gas chlorination.
- 7 Ozone and advanced oxidation  
Removal of micro-pollutants, taste, odour and colour to obtain high quality drinking water.
- 8 Leakage and condition assessment  
A range of intelligent technologies to detect and prevent leaks and potential system failures for elimination of water losses and increase of assets life.
- 9 Water metering and meter data analytics  
High-performance water flow metering ensures delivery of exact water quantities and reduces apparent water losses and agnostic advanced analytics of information from meters.
- 10 Water reuse  
A range of Advanced Oxidation Process (AOP) options combined with Biologically Active Filt



# Water cycle applications

	Large pumps	Borehole pumps	End suction centrifugal pumps	Multistage pumps	Booster sets	Dewatering and drainage pumps	Monitoring & Control
Page number	8	9	10	12	14	15	18
Deep well water pumping		●					●
Surface water pumping	●		●	●		●	●
Power generation	●		●	●			
Water quality monitoring							●
Water transfer	●	●	●	●	●	●	●
Basin drainage and bypass						●	●
Filtration pumping and backwashing	●		●	●			●
Filter backwash water recovery		●					●
Membrane/RO system pressure boosting	●			●			●
Pathogen disinfection							●
Micropollutant oxidation and odour and colour removal							●
Drinking water quality monitoring							●
Water storage and distribution	●	●	●	●	●		●
Network pressure boosting		●		●	●		●
District heating water pumping	●		●	●			●
General plant services	●	●	●	●	●	●	●

# LS Series and e-XC Series

Xylem's large-capacity Lowara pumps are engineered for demanding applications where standard products are insufficient. Our double-suction, axially split pump range ensures superior efficiency, reduced vibration, and long service life, delivering consistent output and lower lifecycle costs. Our high-capacity end suction range delivers reliable performance and is an effective choice for continuous, large-volume fluid transfer, when radial discharge is required.

**Applications:**

- Surface water pumping
- Water transfer

**LS Series**

DN: 125-600 mm  
 Max Head: 170 m  
 Max Flow: 4600 m<sup>3</sup>/h

**e-XC Series**

DN: 80-800 mm  
 Max Head: 220 m  
 Max Flow: 11400 m<sup>3</sup>/h

**e-XC Series**

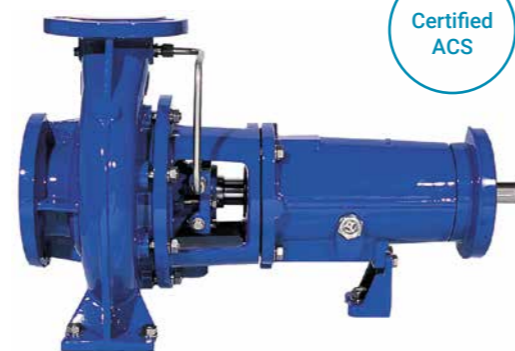
- Simple design for an easy maintenance and reduced LCC
- Different material options
- Complete mechanical seal availability
- Removable bearings and mech seals without opening the upper casing
- Ready for connectivity



Single Stage, Double Suction split case pump

**LS Series**

- Horizontal single-stage end-suction pump has a closed impeller and oil lubricated bearing frame
- Process design, back pull out for easy maintenance; allows disassembly of impeller and bearing frame without dismantling of the pump casing and motor
- Suction branch is axial, discharge radial is upwards (optional horizontal possible)
- Drive by electric motor and flexible coupling is arranged on common base plate
- Volute casing pumps compliant with ISO 5199



Closed impeller 16 bar pumps frame mounted.

Certified ACS

# e-GS, SCUBA, Z6, Z8, Z10, Z12

Xylem's wide range of Lowara 4" to 12" submersible borehole pumps provides a cost-effective solution for a diversity of applications. Available in AISI 304, AISI 316 and duplex stainless steel, these pumps are ideal for situations requiring long service life. The hydraulics are designed for high sand handling capability. Common applications include water supply and irrigation, desalination and deep well dewatering. Durability and high efficiency are key characteristics of both the canned and rewindable versions.

Certified ACS

**Applications:**

- Deep well water pumping
- Surface water pumping
- Water transfer

**Highest hydraulic efficiency on the market**

- Energy and money saving

**All parts made using investment casting\***

- High wear and corrosion resistance for long service life with high efficiency

**Dynamic wear rings**

- Hydrodynamic lubrication\* for minimization of wear and optimization of efficiency

**Slide bearings in each stage**

- Smooth operation and extended lifetime even under extreme operating conditions

**Integrated non-return valve**

- Easy, low-cost installation

**Low maintenance needs**

- High-grade materials and innovative design features (wear rings, slide bearings)

**Duty point optimization**

- Impellers can be trimmed to achieve maximum efficiency\* at specific duty point

**Hydrovar option**

- Optimized performance adjustment according to effective demand, ensuring system protection

**e-GS Series**

Drilling size: 4"  
 Max Power: 7.5 kW  
 Max Head: 340 m  
 Max Flow: 21 m<sup>3</sup>/h  
 Max Immersion depth: 300 m

**Z Series**

Drilling size: 6", 8", 10", 12"  
 Max Power: 350 kW  
 Max Head: 545 m  
 Max Flow: 520 m<sup>3</sup>/h  
 Max Immersion depth: 350 m

**SCUBA Series**

Max Power: 2.2 kW  
 Max Head: 100 m  
 Max Flow: 12 m<sup>3</sup>/h

\* sizes Z8-Z10-Z12



Scuba Z6 Z8 Z10 - Z12

# e-NSC Series

Combining robust design with high efficiency, Xylem's range of Lowara e-NSC end-suction centrifugal pumps provides the perfect fit for any water supply application. Robust and floor mounted, with foot supported volutes in several designs, they are designed for high efficiency, with performance adapted for variable speed control.

The pumps are engineered from stainless steel and cast iron to ensure corrosion resistance as abrasion resistance. Common end-uses include residential and commercial buildings, public utilities, industry and aquaculture, irrigation, chillers and more. The pump is also available with hydrovar® X, the new integrated IE5 PM assisted synchronous reluctance motor and variable speed solution, to achieve lower lifecycle costs across many applications.

Certified  
ACS,  
DM174

## Applications:

- Surface water pumping
- Water transfer
- Filtration pumping and backwashing
- Water storage and distribution
- Network pressure boosting
- Fire hydrant supply
- District heating water pumping
- General plant services

## e-NSC Series

DN: 32-300 mm  
Max Power: 355 kW  
Max Head: 154 m  
Max Flow: 1900 m<sup>3</sup>/h

## Compliant with ErP regulations:

- The pump achieves a Minimum Efficiency Index (MEI) significantly higher than the regulatory threshold of 0.4, ensuring optimal hydraulic performance and energy efficiency in accordance with ErP standards
- Both IE3 and IE4 motors available over the entire range

## Performance boost:

- Improved hydraulics, matching highest market standards in terms of Q&H

## Wider coverage:

- Large coverage from size 32 to size 300, covering a very large scope of need for cleanwater applications.

## Long service life & easy maintenance:

- Robust design, different bearing frame sizes and stainless steel replaceable wear rings
- Comprehensive and improved mechanical seals offering
- Back pull-out design

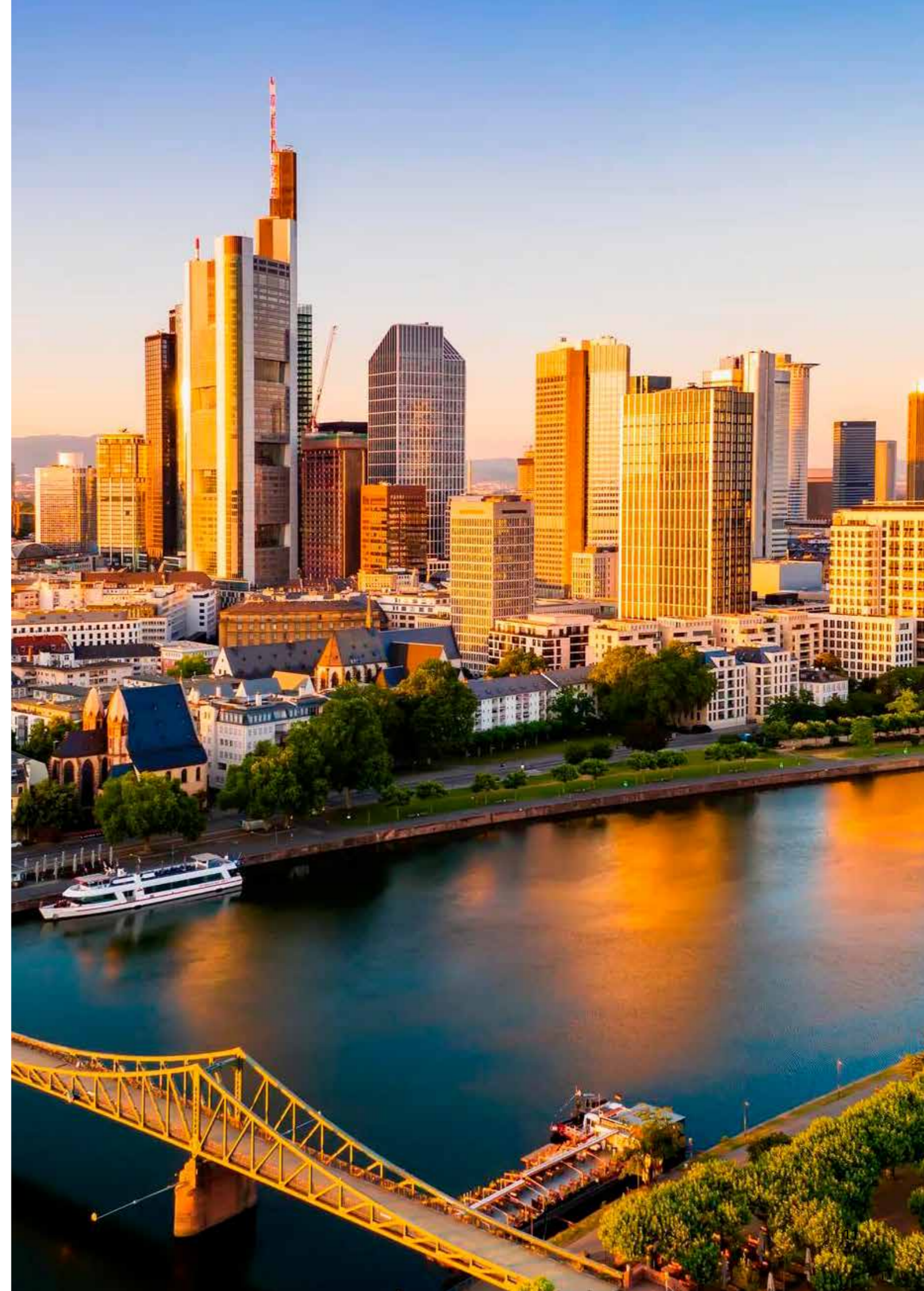
## Reduced complexity:

- Lighter and more compact, with more shared components



NSCS

NSCF



# e-MP and P Series

Xylem's multistage Lowara-branded e-MP pumps in cast iron are designed to be installed and configured both vertically and horizontally. Robust and highly efficient, they ensure a long service life and low operational costs for many years. Xylem's e-MP and P pumps are useful in numerous applications, including water transfer and network pressure boosting in water utilities, building services, agriculture and more. Today, they are also used for water supply in some of the highest buildings in the world as well as for filter pumping.



**Applications:**

- Surface water pumping
- Water transfer
- Filtration pumping and backwashing
- Membrane/RO system pressure boosting
- Water storage and distribution
- Network pressure boosting
- Fire hydrant supply
- District heating water pumping
- General plant services

e-MP Series	P/MP Series
DN: 50-15 mm	DN: 300 mm
Max Power: 1250 kW	Max Power: 1400 kW
Max Head: 950 m	Max Head: 400 m
Max Flow: 850 m <sup>3</sup> /h	Max Flow: 1800 m <sup>3</sup> /h

**Simple integration:**

- Flexible mechanical configurations
- Suction impeller (low NPSH)

**Safe operation:**

- Monitoring and control interfaces
- Large self-cleaning seal chamber

**Energy savings:**

- High-efficiency hydraulics
- U-turn channels

**Projectable service:**

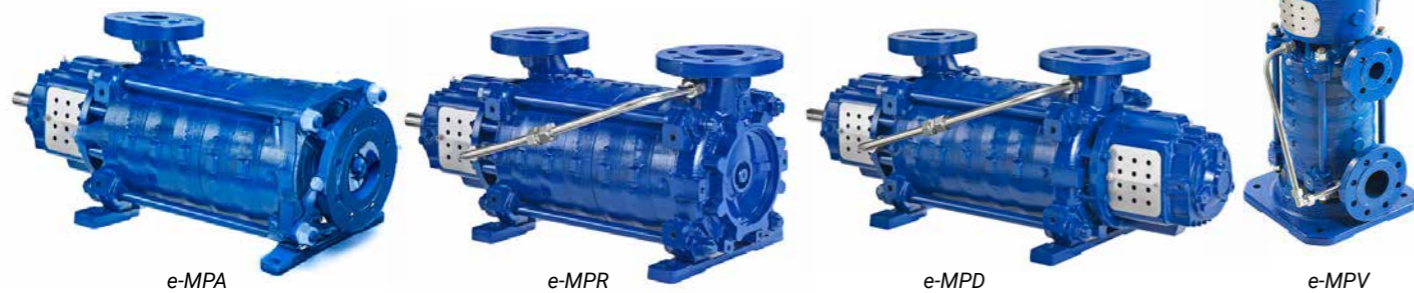
- Optional sensor for bearing temperature and vibration
- Can be connected to any intelligent plant monitoring and diagnostic system

**Reduced wear:**

- Plain bearing made of tungsten carbide and balancing system, reducing axial thrust on bearings and load on mechanical seals

**Easy maintenance:**

- Bearing, mechanical seal and balancing drum bush can be serviced without removing the pump from the piping system
- Modular design reduces number of spare parts needed



# e-SV Series

Xylem's stainless steel Lowara-branded e-SV vertical multistage pumps offer a highly reliable, technologically advanced and multi-purpose solution for diverse clean water duties. Whether it's pressure-boosting, water supply or another application, the e-SV range – featuring 11 different sizes and multiple designs – gets the job done. Additional applications include civil, agricultural, light industry, water treatment, heating and air conditioning. The pump is also available with hydrovar® X, the new integrated IE5 PM assisted synchronous reluctance motor and variable speed solution, to achieve lower lifecycle costs across many applications.



**Applications:**

- Surface water pumping
- Water transfer
- Filtration pumping and backwashing
- Membrane/RO system pressure boosting
- Water storage and distribution
- Network pressure boosting
- Fire hydrant supply
- District heating water pumping
- General plant services

e-SV Series
DN: 25 -125 mm
Max Power: 55 kW
Max Head: 330 m
Max Flow: 160 m <sup>3</sup> /h

**Premium efficiency:**

- Save energy and reduce costs
- Smart version with IE5 permanent magnet motor and embedded drive
- e-SV X and X+ version with IE5 assisted reluctance motor and embedded drive

**Lower NPSH:**

- Quick, easy and low-cost installation

**Easy-to-replace standard mechanical seal:**

- Only one service person needed, availability everywhere
- High availability
- Reduced maintenance and production stop costs

**Standard vertical motor:**

- High availability
- Easy to customize
- Lower impact in production footprint

**Balanced impeller\*:**

- No inlet pressure limitation
- Standard vertical motor
- Lower installation and maintenance costs

**Dry run sensor:**

- Increased mean time bet ween failure
- Lower maintenance and production stop costs

\* Sizes 1-22



## BOOSTER SETS

# GHV hydrovar® X Booster Sets

GHV series booster sets are fully automatic packages for water supply, water pressure increase and water transfer in condominiums, office buildings, hotels, public buildings, industries and other applications. GHV series is equipped with up to 8 vertical multistage e-SV hydrovar® X+ pumps; each of those can automatically control the booster set, granting the maximum reliability.

Thanks to its unique compact design version, the GHV series makes installation possible even in tight spaces. GHV series is easy to program, designed for maximum energy efficiency and can communicate with BMS systems via Modbus or BACnet. GHV series is certified for use with potable water. GHV booster sets are also available with hydrovar® X+ Smart Controller for larger systems and applications.

### Applications:

- Network pressure boosting
- Water storage and distribution
- Water transfer
- Membrane RO system pressure boosting
- General plant services

### GHV hydrovar® X Series

Power: 8x22 kW  
Max Flow: up to 1280 m³/h  
Max Head: up to 250 m

*Other solutions on request*

### High reliability:

- Designed to avoid potential single points of failure
- Intelligence is present in each drive
- Multi-master: failsafe system even in case one or more drives not being available
- Each drive is controlled by an own independent pressure sensor: full redundancy as standard
- Balanced impellers on e-SV reduce axial thrust

### Remote monitoring and control:

- ModBus and BACnet as standard
- Additional I/Os also possible
- Remote monitoring is also possible

### Certified for potable water use:

- Drinking water approved
- No contamination of water

### Compact dimensions:

- Compact layouts allow installation where space is at premium
- Load control enables even smaller pumps



GHV hydrovar® X

GHV with hydrovar® X+ Smart Controller

## SUBMERSIBLE DEWATERING AND DRAINAGE PUMPS

# DOC, DOMO, DIWA Series

The Xylem Lowara dewatering pump range in stainless steel is designed for portable or fixed installations. Suitable for clean or light contaminated water like flooded basements, ground water and run off water.

### Applications:

- Surface water pumping
- Water transfer
- Basin drainage and bypass
- Fire hydrant supply
- General plant services

### DOC Series

Max Flow: 14 m³/h  
Max Height: 11 m  
Max Power: 0,55 kW

### DOMO Series

Max Flow: 40 m³/h  
Max Height: 14,5 m  
Max Power: 1,5 kW

### DIWA Series

Max Flow: 25 m³/h  
Max Height: 21 m  
Max Power: 0,55 to 1,50 kW

### Convenient:

- Compact, lightweight and easy to carry
- Easily stored in service vehicles for quick response
- Simple to install and service
- Easy access for cable and component changes
- Quick replacement of wear parts and seals

### High performance:

- Minimized back flush with built-in non-return valve
- Tough and durable with cast aluminum outer casing, stator housing and polyurethane hydraulic parts



DOC

DOMO

DIWA

# hydrovar® X

hydrovar® X is an integrated IE5 PM-assisted synchronous reluctance motor and VSD solution developed to connect and optimize Xylem hydraulic pumps. It enables users across a wide range of applications to enhance pump performance while reducing energy footprint and lifecycle costs. With extended I/O, IoT, wireless and wired connectivity, hydrovar® X has a smart interface for easy set up and commissioning.

## Applications:

- Deep well water pumping
- Surface water pumping
- Water transfer
- Filtration pumping and backwashing (air or water)
- Membrane/RO system pressure boosting
- Water storage and distribution
- Network pressure boosting
- Fire hydrant supply
- District heating water pumping
- General plant services

## Benefits:

- Ultra premium efficiency motor providing full range from 3 to 22 kW
- Graphical color display
- IE5 motor equipped with advance control for the highest efficiency level and to extend the lifetime of the motor
- Multipump capability as standard with no single failure point

## hydrovar® X

Voltage: three phase 400V  
 Power: up to 22kW  
 Multipump capability: up to 8 units  
 Power supply: 50/60Hz  
 Comms: BACnet & Modbus standard in single pumps  
 IES2 package with IE5 motors  
 Enclosure rate: IP55  
 Ambient temperature: -20°C / +50°C full power

- Communication protocols available soon
- Remote control and management via app
- Preset from factory
- Guided commissioning via Genie
- Complete set of languages

## hydrovar® X and Xylem Vue Secure Connect, better together!

hydrovar® X can communicate with Xylem Vue Secure Connect IoT platform enabling to have a complete overview of all connected assets, anytime, anywhere. Xylem Vue Secure Connect collects historical data to analyze trends and generate alerts preventing failures and equipment downtime. You get the right insights to make smarter decisions with the remote and on-site support from Xylem and our partners.



Scan for more about remote monitoring



# hydrovar® X+ Smart Controller

Designed to extend the capabilities of hydrovar X+ to larger systems, the hydrovar X+ Smart Controller is an intelligent solution designed especially for applications above 22kW. It offers the same trusted design and functionalities of hydrovar X+, now with greater versatility, providing users with a scalable option without any added complexity.



## Applications:

- Water Utilities & Municipal
- Commercial Building Services
- Industrial
- Agriculture & Irrigation



## GHV booster sets with hydrovar® X+ Smart Controller

Flow: Up to 1280 m³/h  
 Power: Starting from 30kW  
 Enclosure rate: IP55 (pump), IP66 (Controller)  
 Multi-pump capability: up to 8 pumps

# Smart pump range

The Lowara Smart Pump range incorporates state-of-the-art technology to optimize performance, communicate with other building systems and help you achieve your goals. Choose preprogrammed packages for easy, cost-effective installation - and benefit from this system's power, intelligence and performance. The range is available for horizontal and vertical multistage pumps, in-line pumps, and booster sets.



## Applications:

- Residential
- Light industrial
- HVAC
- Booster set
- OEM



**e-SVE**  
 Vertical multi-stage stainless steel pumps



**e-LNTEE/LNTSE**  
 Single and twin in-line pumps

## Smart pump range

Voltage: single phase 230V - three phase 400V  
 Power: up to 2.2kW  
 Multipump capability: up to 3 units  
 Power supply: 50/60Hz  
 Comms: BACnet & Modbus standard in single pumps  
 IES2 package with IE5 motors  
 Enclosure rate: IP55  
 Ambient temperature: -20°C / +50°C full power  
 EMC: single phase C1 - three phase C2 category compliant EN 61800-3  
 Harmonics: compliant with IEC/EN 61000-3-2

# Optimize

## Condition monitoring to optimize you bottom line

The optimize™ modular condition monitoring solution provides health guidance and predictive maintenance advice for rotating and fixed assets such as pumps, motors, heat exchangers and steam traps.

It periodically monitors system vibration and temperature and allows everyday users to access simple-to-use monitoring tools from iOS or Android mobile devices.

Using predictive analysis, optimize identifies potential problems with your equipment before they occur, to help you manage system reliability and maintenance. Information is monitored, collected, stored and analyzed in the optimize sensor. This allows you to understand the current health and historical trends of your assets, create maintenance reminders and generate detailed reports. As a result, you can perform preventative maintenance before issues become critical to uptime.

### Benefits:

- Predictive maintenance to monitor the health of mechanical and electrical assets
- Asset management including asset location, size and manufacturing date
- System transparency to optimize reliability
- Optimized reporting that helps to simplify documentation, manage system maintenance and inform purchasing
- The ability to automatically share data with multiple local users
- Conveniently monitor system conditions on our simple-to-use mobile application

### Industries:

- Commercial Building Services
- Manufacturing
- Agriculture
- Water Utilities

### Condition Monitoring:

- Monitoring the vibration of pumps and motors
- Monitoring the temperature of pump bearings
- Monitoring the temperature of motors to prevent overheating and winding damage
- Monitoring the performance of heat exchangers



# The best products are only half the reason to work with us.

## Our people make the difference

Industrial-strength thinking helps us engineer, design and manufacture the highest quality pumps and related equipment. But that's not all. We apply the same dedication and expertise to every aspect of our relationship with you. Our people – and how they partner with you – are what makes Xylem the right choice for your industrial water and fluid management solutions.

## Our expertise solves the challenge

Nobody spends more time thinking about industrial water and fluid management. With hundreds of thousands of customers and millions of installations, we have more experience across more types of challenges, and can design solutions that provide more value today and tomorrow.

## Aftermarket & Service

To provide fast and reliable maintenance and repairs of our Xylem products in all kinds of industries everywhere in the world, we have established a network of authorized, local service providers. We are pleased to recommend our professional and experienced Xylem Authorized Service Partners.

When you go to a Xylem Authorized Service Partner you can be sure to receive qualified, high-quality service. Our partners are trained and certified to provide Xylem specified services, including the following:

- Installation & Commissioning
- Repair & Maintenance
- Maintenance Agreements
- Inspection & Auditing
- Plant and equipment upgrades/refurbishments
- Genuine Spare Parts



# Xylem |'zīləm|

- 1) The tissue in plants that brings water upward from the roots;
- 2) a leading global water technology company.

Xylem is a leading global water solutions company dedicated to advancing sustainable impact and empowering the people who make water work every day. Xylem connects diverse capabilities and innovative technologies to provide tailored solutions across the entire water cycle. From moving, treating and measuring water to optimizing and maintaining water systems, Xylem collaborates with customers to solve their most critical challenges. Together, through partnerships with utilities, industrial manufacturers, building operators, and communities, we are building a more water-secure world.

For more information on how Xylem can help you, go to [www.xylem.com](http://www.xylem.com)

---

[xylem.com](http://xylem.com)

[xylem.com/lowara](http://xylem.com/lowara)

All information presented herein is believed reliable and in accordance with accepted engineering practices. Xylem makes no warranties as to the completeness of this information. Users are responsible for evaluating individual product suitability for specific applications. Xylem assumes no liability whatsoever for any special, indirect or consequential damages arising from the sale, resale or misuse of its products. Subject to change without notice.

© 2026 Xylem Inc. or its affiliate. All rights reserved. Lowara and hydrovar X are trademarks of Xylem or one of its subsidiaries.

02-2026

**xylem**  
Let's Solve Water