

xylem




Xylem's Sensus iPERL[®] +:
5 reasons to believe this is
the last residential meter
you'll ever buy

SENSUS
xylem

Accuracy in residential water metering is essential – especially at low flows. With the rise of efficient fixtures, ice makers, and filtered water dispensers, capturing every drop matters more than ever. The Xylem’s Sensus iPERL+ meter uses electromagnetic technology to deliver unmatched precision across all flow rates – even at flows that other meters miss. Its solid-state design ensures long-term accuracy for 20 years. With tens of millions meters installed, iPERL+ is the most proven static meter available. Now more than ever.

1 Exceptional accuracy

- Has 0.03 gmp starting flow*
- Measures low flows accurately ($\pm 3\%$ down to 0.05 gpm or 0.01 m³/hr) for 5/8" – 3/4" models, enabling precise billing and reducing non-revenue water
- Detects leaks and bursts
- Utilizes a continuous electromagnetic measuring technology, which follows any variation in the water flow much more precisely than ultrasonic meters, which sample the flow at different sampling rates



What does
0.05 gpm
look like?

It's roughly equivalent to **one slow drip every 2 seconds** from a leaky faucet.

Over time, that
adds up - about

72
gallons
per month.

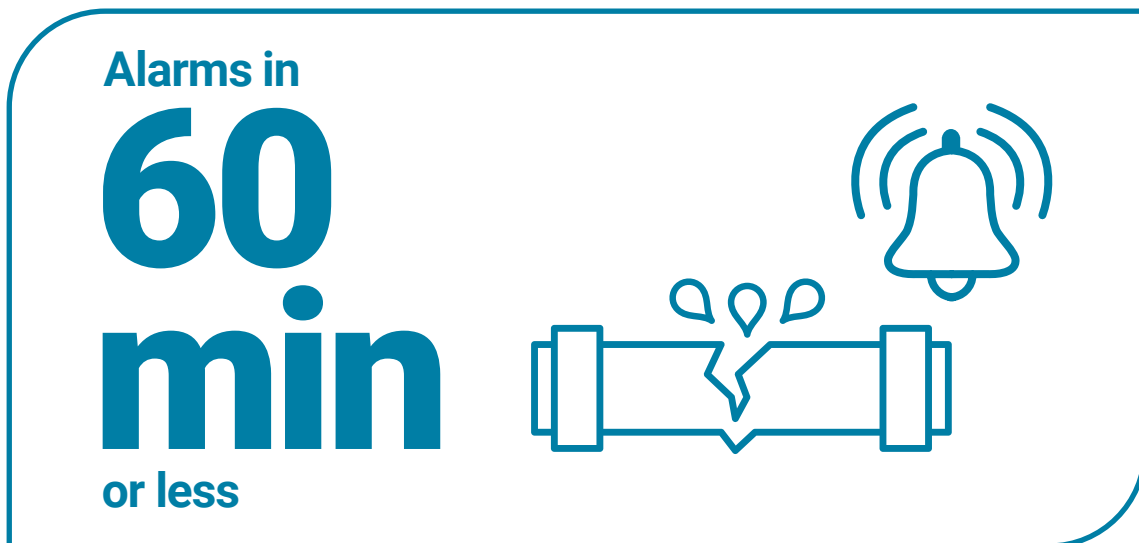
2 Long-term reliability & durability

- Nearly 20 million sold worldwide
- 20-year accuracy and battery warranty
- Available with polymer or lead-free bronze alloy flow tubes for harsh environments and shifting soils



3 Advanced smart alarms

- 14 smart alarms – including tamper and continuous, high, and reverse flows – improve customer service and can help prevent damage and loss during emergency conditions
- When connected to the Sensus FlexNet® Communication Network alarms are communicated in near real-time, compared to delayed notices by other networks



4 Enhanced data logging & remote management

- Logs up to 120 days of hourly consumption data
- Fully compatible with Sensus AMR or AMI
- Supports two-way communication for advanced metering infrastructure (AMI) and allows remote meter reads, configurations, and over-the-air updates



120
days of
hourly
data

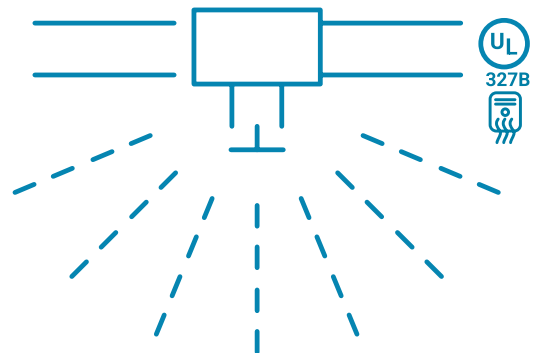
5 Flexible installation and applications

- Can be installed horizontally, vertically, or diagonally, simplifying deployment
- Available for potable and reclaimed water (5/8" through 1") and fire service under UL 327b (3/4" and 1")

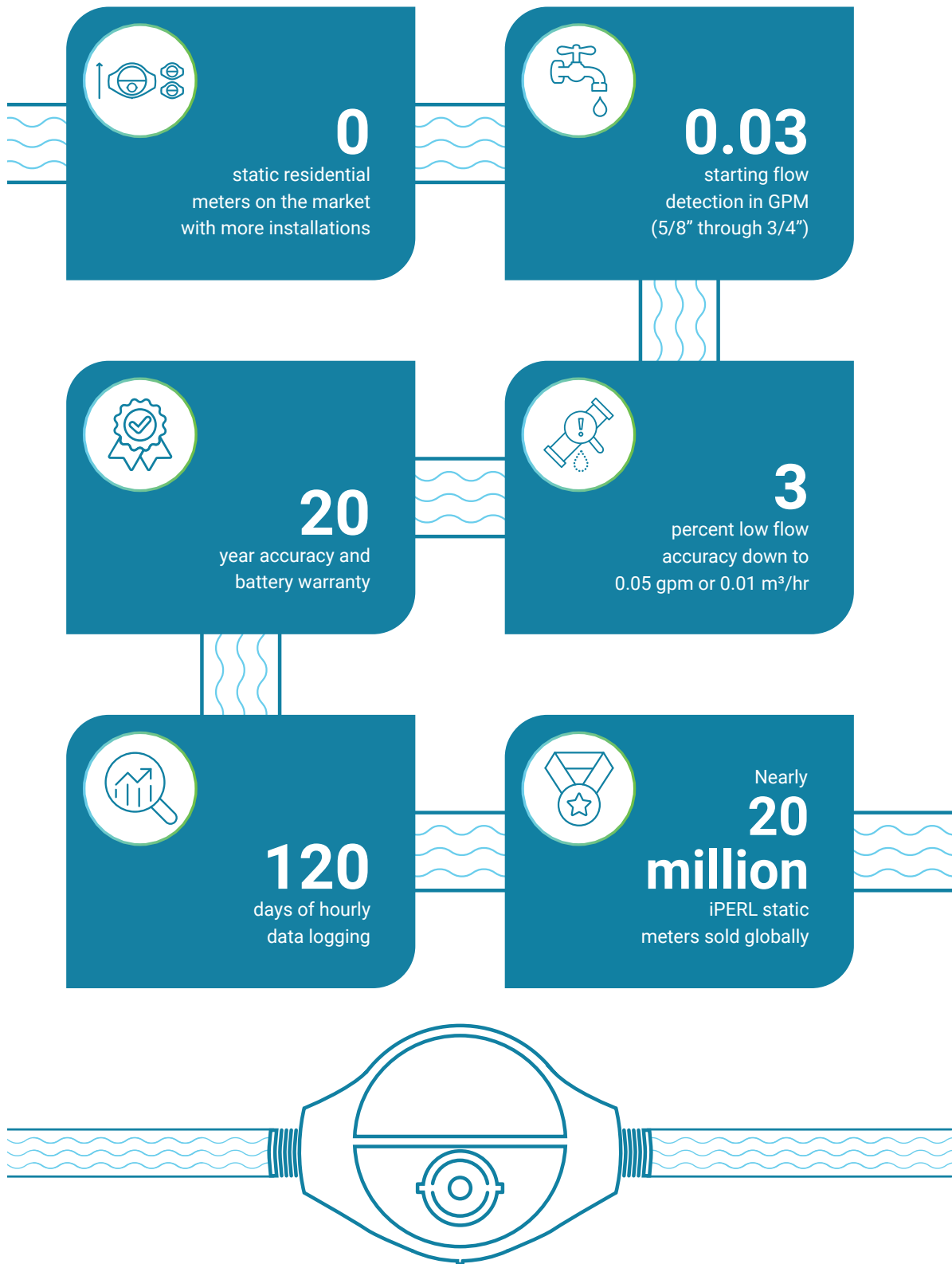
iPERL+

Includes

Fire Service Models



Xylem's Sensus iPERL+ by the numbers



Xylem |'zīləm|

- 1) the tissue in plants that brings water and nutrients upward from the roots.
- 2) a leading global water solutions company.

Xylem is a leading global water solutions company dedicated to advancing sustainable impact and empowering the people who make water work every day. Xylem connects diverse capabilities and innovative technologies to provide tailored solutions across the entire water cycle. From moving, treating and measuring water to optimizing and maintaining water systems, Xylem collaborates with customers to solve their most critical challenges. Together, through partnerships with utilities, industrial manufacturers, building operators, and communities, we are building a more water-secure world.

For more information on how Xylem can help you, visit xylem.com.

Learn more about the revolutionary iPERL+ meter:
xylem.com/iPERL+

**SENSUS**

Sensus, a Xylem Brand
639 Davis Dr, Morrisville,
NC 27560
xylem.com/sensus

All information presented herein is believed reliable and in accordance with accepted engineering practices. Xylem makes no warranties as to the completeness of this information. Users are responsible for evaluating individual product suitability for specific applications. Xylem assumes no liability whatsoever for any special, indirect or consequential damages arising from the sale, resale or misuse of its products. Subject to change without notice.

© 2025 Xylem Inc. or its affiliates. All rights reserved. iPERL+ is a trademark of Xylem or one of its subsidiaries.

WBR-10010

xylem