

# Copying Coordinates to Google Earth and the Clipboard in MBMAX64

by Andrew Clos

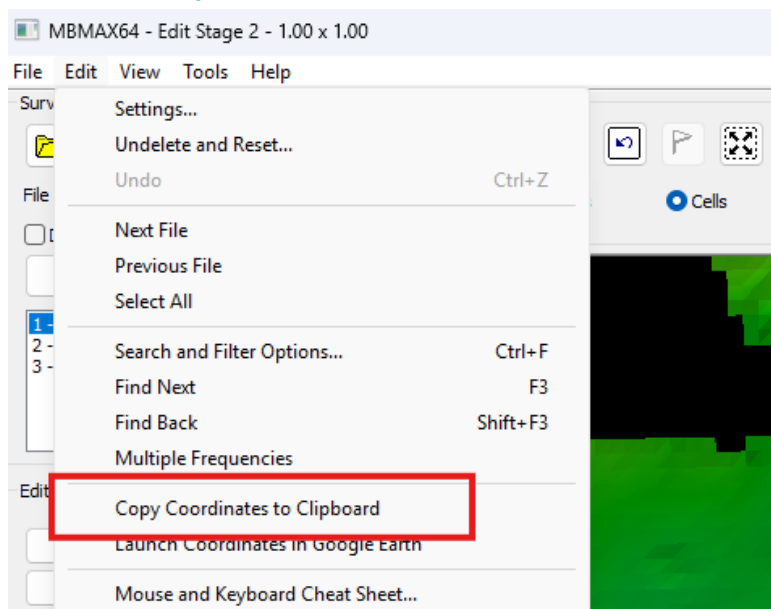
Hello Fellow HYPACK Users,

A couple of new features have been added to HYPACK®'s Multibeam Editor (MBMAX64) that should make copying coordinates a bit more convenient. Let's say you're working on some multibeam data and you've identified a new feature that might be a danger to navigation. You've selected a sounding on this new feature, but you'd like to copy those coordinates to your report, or perhaps you'd like to view that point in Google Earth to see what else is around the area. Well, now you can do that from the Edit drop down menu in MBMAX64.

## Copy the Coordinates to the Clipboard

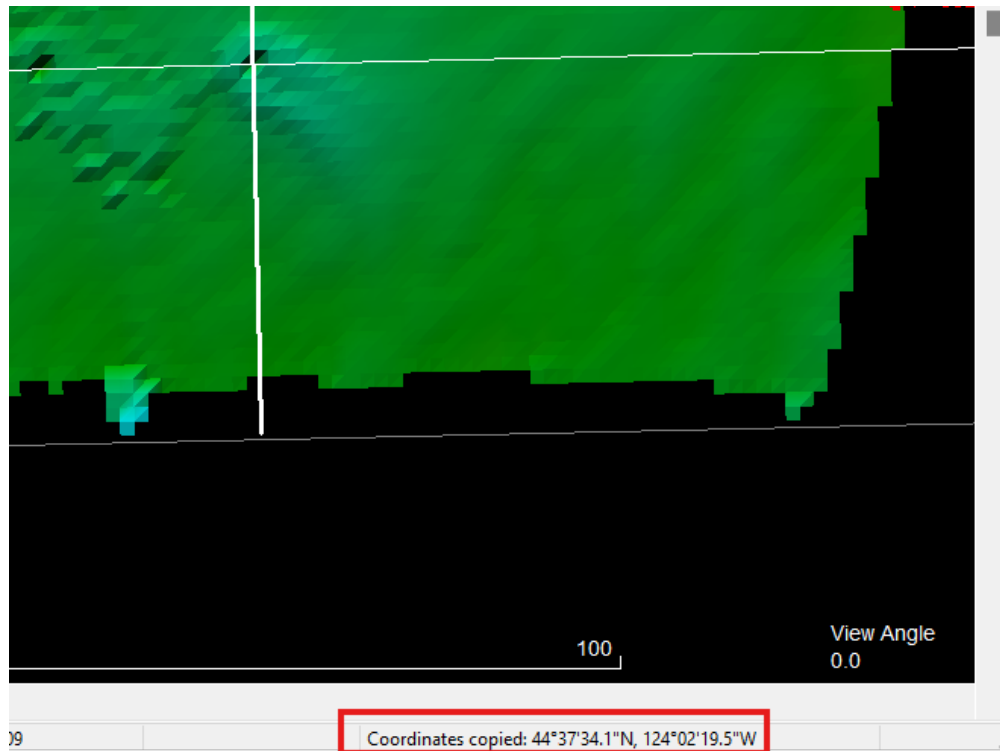
To copy the coordinates in Degree, Minute, Seconds format to the clipboard so you can paste them in another program, navigate to the Edit menu and select Copy Coordinates to Clipboard. Please note that you'll need to be in Stage 2 processing for this feature to be active in MBMAX64.

**Figure 1. Copying coordinates to the clipboard from the MBMAX64 Edit menu**



When you select the Copy Coordinates to Clipboard option, a coordinates copied notification appears in the lower right corner of the screen and displays the coordinate values. This option behaves how the normal copy and paste functions work in Microsoft Windows, and you can now paste these coordinates anywhere you'd like.

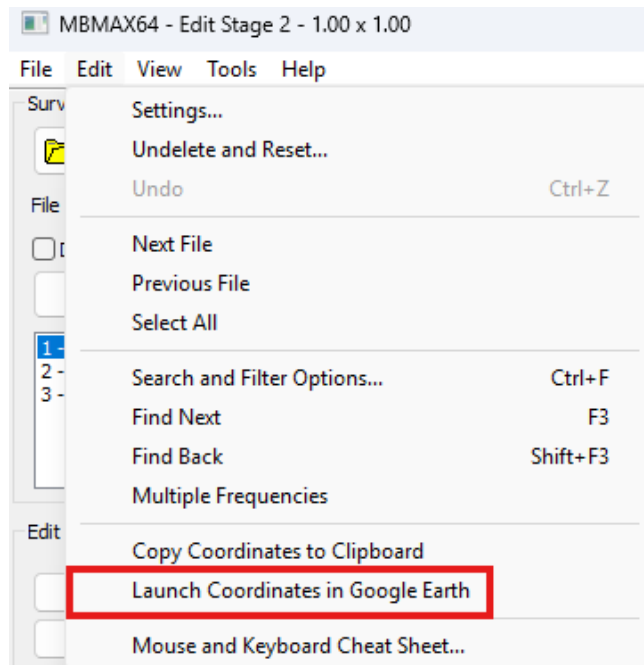
Figure 2. The Coordinates Copied message informs the user that coordinates have been placed on the clipboard



## Launching Coordinates in Google Earth

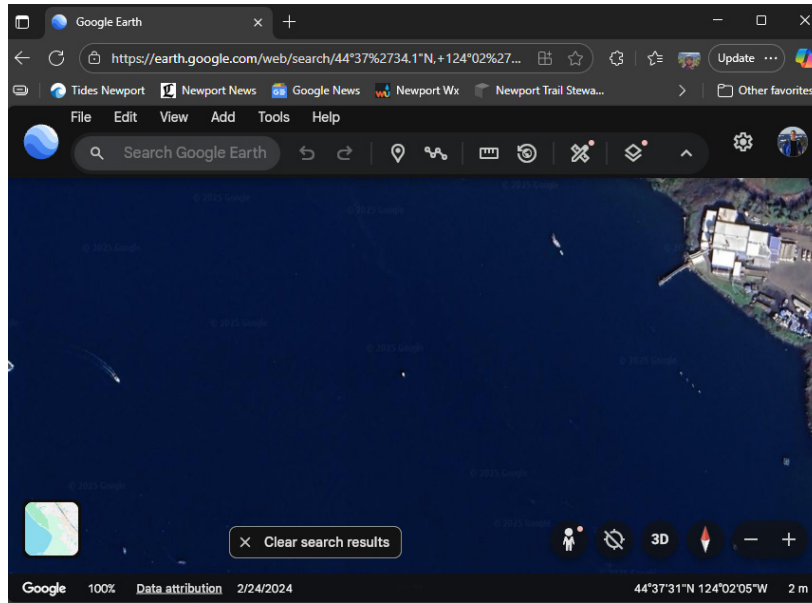
If you'd like to open these coordinates in Google Earth, select your feature, navigate to the Edit menu, and click the Launch Coordinates in Google Earth option.

Figure 3. Launch coordinates in Google Earth from the MBMAX64 Edit menu



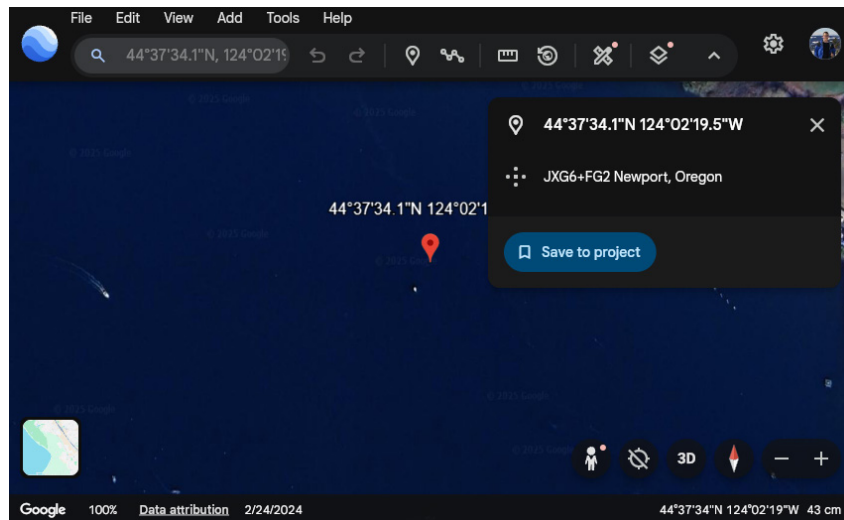
Your selected coordinates are now copied to the clipboard and Google Earth will open in your default browser at your desired location.

**Figure 4. Google Earth centered over the coordinates of interest**



If you'd like to drop a pin at the location of your coordinates, just left click in the Search Google Earth text box in the upper left portion of the browser window. The coordinates will be dropped into the search field. Press Enter and the pin will appear.

**Figure 5. Pin dropped in Google Earth after left clicking in the search window and pressing Enter**



## Thank You

I hope you find this new feature to be a time saver for your workflow. Please let me know how you like it, I welcome any feedback.

Happy Surveying,  
Andrew Clos