



HYPACK® Environmental Mapping

MAP SMARTER. WORK FASTER. UNDERSTAND MORE.

BENEFITS

ADVANCED DATA ACQUISITION

- Plan surveys, collect various brand sensor measurements with real-time QA/QC
- Use ADCP for multi-echosounder bathymetry mapping

ENVIRONMENTAL MONITORING TOOLS

- Water quality mapping (temperature, turbidity, dissolved oxygen and more)

POWERFUL DATA PROCESSING

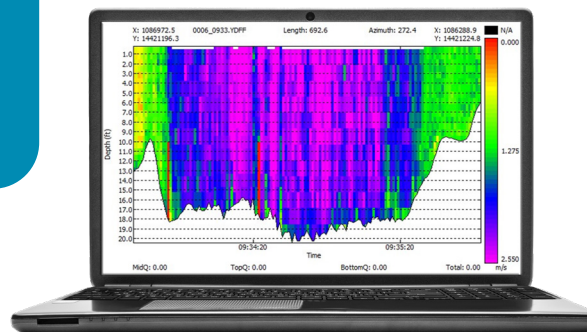
- Automated data cleaning and filtering
- High-resolution bathymetric modeling
- Accurate contour generation and volume calculations

VISUALIZATION & REPORTING

- 2D & 3D data visualization tools
- Customizable maps, charts and reports
- Direct export to GIS platforms

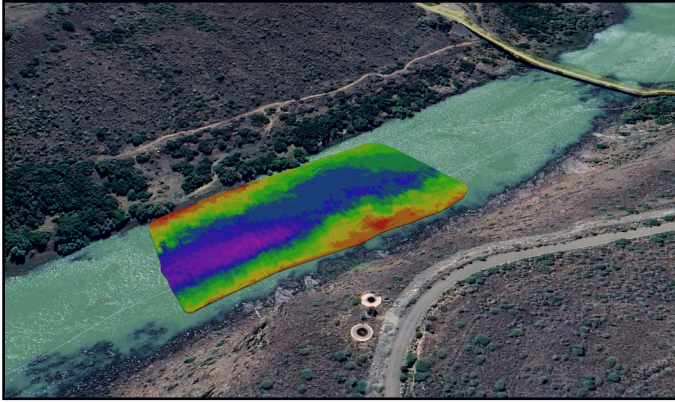
HYPACK® Environmental Mapping Software is a powerful, industry-proven solution designed for hydrographic professionals, environmental scientists, and geospatial experts. Whether operating in coastal waters, rivers, lakes, or offshore environments, HYPACK® enables you to collect, process, and visualize data with precision and confidence. Turn complex environmental data into clear, actionable insights, faster than ever.

Environmental surveys involve a range of sensors, methods, and procedures, and users often need to compare data from different sources or projects. With our software, you can align datasets both spatially and temporally to gain valuable insights bodies of water from top to bottom by observing trends and correlations between measured parameters. Combine the power of HYPACK® Environmental Mapping Software with ADCP technology to achieve high-precision bathymetric surveys while simultaneously capturing water current data. This integrated approach enables you to map underwater terrain with exceptional accuracy, while gaining critical insight into flow dynamics.

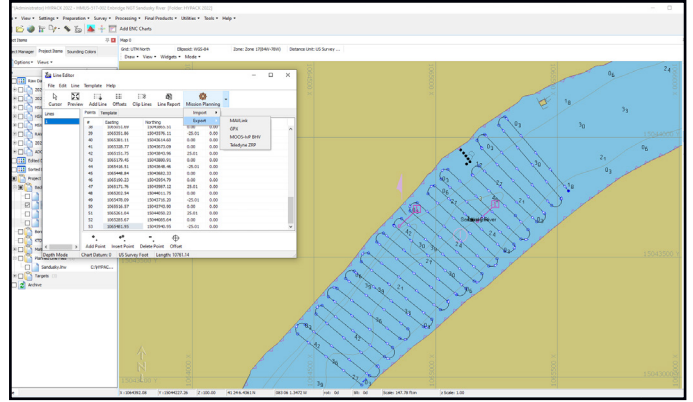


HYPACK® Environmental Mapping

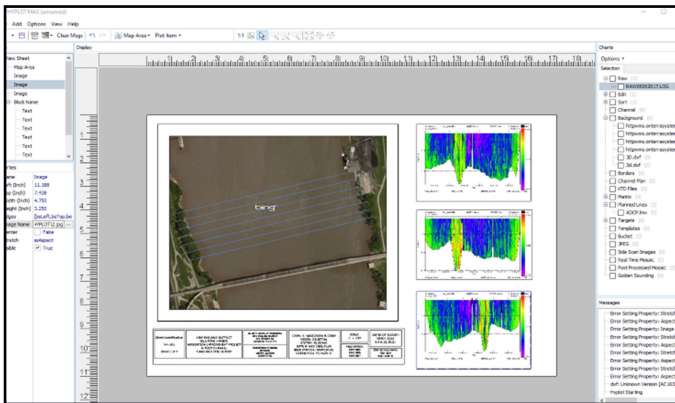
Software to Collect, Edit, Visualize, Map, and Manage Environmental Sensor Data



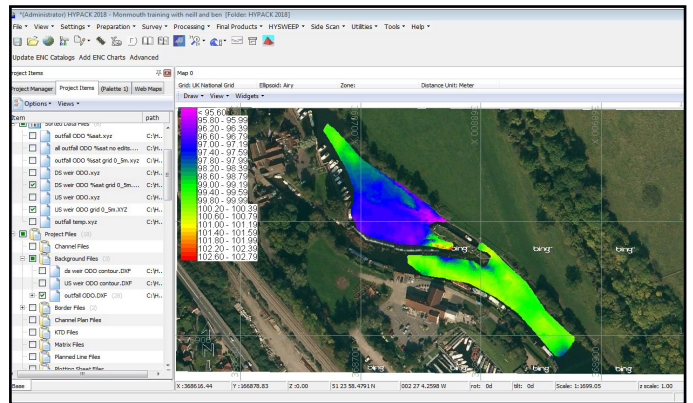
Collect and visualize bathymetry data, like this example of bathymetry mapping using an ADCP and exported to Google Earth.



Perform mission planning and QA/QC for autonomous vehicles from a web browser.



Easily create maps, charts, and final products using HYPLLOT MAX.



Generate contour maps of environmental parameters, like this dissolved oxygen plot example.

HYPACK® Environmental Mapping Specific Features and Supported Brands

Survey Planning

HYPACK® Shell: Standard features including mission planning tools that export to MavLINK, Teledyne ZRP, MOOS-IvP and GPX formats.

Geodesy

HYPACK® Geodesy Toolbox: Standard features including pre-defined, country-specific, or custom horizontal and vertical coordinate grid frames and EPSG code support.

Position and Depth Support

HYPACK® SURVEY: Standard features including GPS (NMEA-0183), RTK support, and bottom-tracking DVL. Compatible with POSMV, SBG, Trimble, VectorNAV, and others. Compatible with SonTek, RDI, Rowe, and Nortek instruments for bathymetry mapping. Echosounder support for depth values DBT & DPT (NMEA-0183) only.

Autonomous Vehicles

Supports most AV brands including YSI (i3XO, Surfbee, ArQPOD), Seafloor Systems, and SeaRobotics.

Acoustic Doppler Current Profilers

Collect with real-time QA/QC or post-process data to map ADCP velocities and multiple-beam bathymetry. Calculate USGS volumetric flow rates. Compatible with SonTek, RDI, Rowe, and Nortek instruments.

Environmental Sensors

Collect with real-time QA/QC or post-process data for up to 32 water quality parameters (includes generic ASCII data parser.) Compatible with YSI CastAway®-CTD, YSI 6600, YSI EXO Sonde, YSI Turbidity Monitor and other water quality sensors. Also compatible with WindObserver anemometer, and various brands of water level gauges.

Data Products

Export to GIS/CAD or exchange (import/export) data with products from ESRI
HYPLLOT® MAX: Standard features for creating maps and data overlays for reports.

HYPACK, a Xylem brand
56 Bradley Street
Middletown, CT 06457, USA

+1.860.635.1500
sales@hypack.com
hypack.com

