

xylem



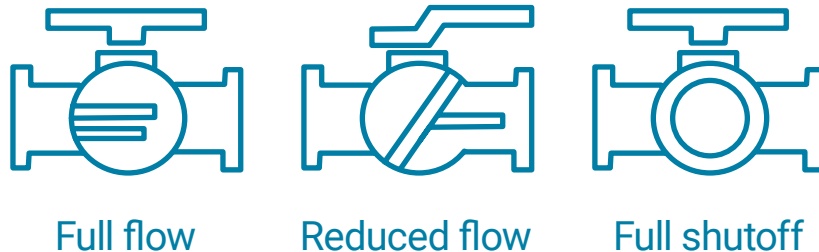
Xylem's Sensus ally[®]:
5 reasons to believe this is your
solution for residential water
metering and network control

SENSUS
xylem

Remote control of water service is transforming utility operations, and Xylem's Sensus ally meter is establishing a new standard. Its innovative three-state ball valve allows utilities to remotely reduce flow, fully restore service, or completely shut off water — eliminating the need for field visits. This flexibility enhances customer service, supports enforcement of non-payment policies, and enables rapid response during emergencies. Unlike meters that only restrict flow, ally's full shut-off capability is vital in situations like freezing temperatures, line breaks, or natural disasters, helping protect both public infrastructure and private property. Combined with built-in temperature and pressure sensors, the ally meter gives utilities real-time control and insight into their water network.

1 Integrated remote service valve

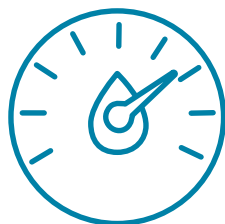
- The first and most proven residential meter in the market that can be activated remotely with a three-state ball valve: open / reduced flow / fully closed.
- ally is the only residential meter with full shut-off capability.
- This valve can be remotely adjusted to any of the three positions to improve customer service, is extremely helpful in emergency cases, eliminating the need for truck rolls, and can be activated during emergencies to maintain pressure in the water system.



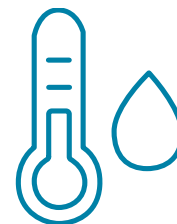
2 Advanced sensing and alarms

- Pressure sensor helps to identify leaks and to diagnose customer complaints, and provides crucial system data for water models and digital twins.
- Temperature sensor alerts to near-freezing conditions and high temperature issues.
- 14 smart alarms, including tamper and continuous, high, and reverse flow.

Water
pressure

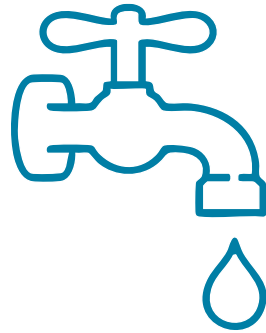


Water
temperature



3 Exceptional accuracy

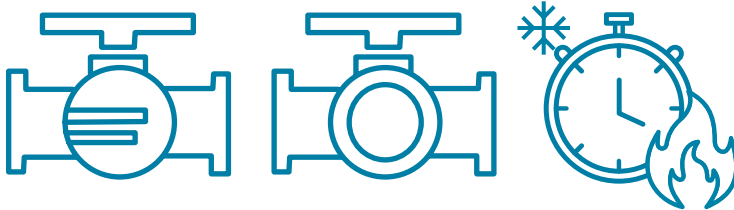
- Starting flow of 0.03 gpm (5/8" – 3/4" models).
- Accurately measures low flow ($\pm 3\%$ down to 0.10 gpm or 0.025 m³/hr).
- Detects small leaks and enables precise billing, reducing non-revenue water.



Sensus ally meter registers flow at **0.03 gpm**

4 Long-term reliability and flexibility

- 15-year accuracy and battery warranty.
- Designed for both potable and reclaimed water applications.
- Thanks to the Sensus FlexNet® Communication Network, ally valve changes can be done in just minutes, while other meters may take over two hours.



Whether due to emergencies from fire, ice, or storms, **utilities can remotely control the ally valve within minutes to maintain system pressure**

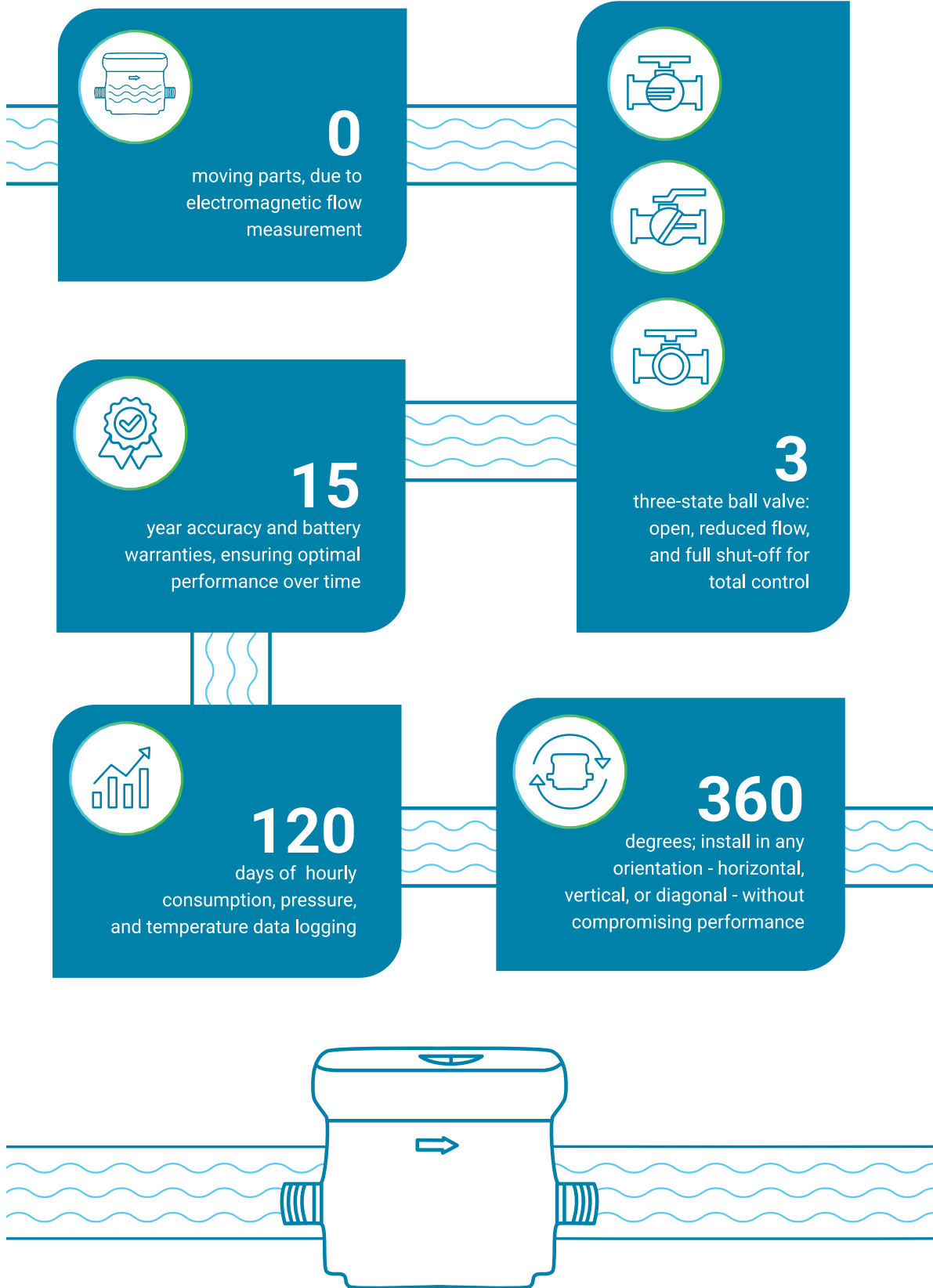
5 Smart data and communication

- Supports two-way communication for advanced metering infrastructure (AMI) and allows remote meter reads, configurations, and over-the-air updates.
- Includes 120 days of hourly consumption, pressure, and temperature data logging. The actionable data results in reduced customer service calls and faster resolution of billing issues.



120 days of hourly consumption, pressure, and temperature data logging

Xylem's Sensus ally by the numbers



Xylem | 'zīlām|

- 1) the tissue in plants that brings water and nutrients upward from the roots.
- 2) a leading global water solutions company.

Xylem is a leading global water solutions company dedicated to advancing sustainable impact and empowering the people who make water work every day. Xylem connects diverse capabilities and innovative technologies to provide tailored solutions across the entire water cycle. From moving, treating and measuring water to optimizing and maintaining water systems, Xylem collaborates with customers to solve their most critical challenges. Together, through partnerships with utilities, industrial manufacturers, building operators, and communities, we are building a more water-secure world.

For more information on how Xylem can help you, visit xylem.com.

Learn more about the revolutionary ally meter:
xylem.com/ally

The logo for Sensus, featuring the word "SENSUS" in a bold, sans-serif font. Above the letter "S" are three horizontal bars of varying lengths, stacked vertically.

Sensus, a Xylem Brand
639 Davis Dr
Morrisville, NC 27560
xylem.com/sensus

All information presented herein is believed reliable and in accordance with accepted engineering practices. Xylem makes no warranties as to the completeness of this information. Users are responsible for evaluating individual product suitability for specific applications. Xylem assumes no liability whatsoever for any special, indirect or consequential damages arising from the sale, resale or misuse of its products. Subject to change without notice.

© 2025 Xylem Inc. or its affiliates. All rights reserved. Cordonel is a trademark of Xylem or one of its subsidiaries.

WBR-10011

The Xylem logo, consisting of the word "xylem" in a lowercase, blue, sans-serif font.